

GALLERIA  
LEASING OPPORTUNITIES

---





INSPIRED BY

# *THE UNCOMMON*

／

The Galleria is the upper Midwest's most uncommon shopping destination offering exclusive fashion, home, beauty and dining moments. Located south of downtown Minneapolis in Edina, Minnesota, we carry a collection of well-known international brands in addition to luxe local stores and unique dining options.

A CURATED *MIX*

／ 70

HIGH-END NATIONAL BRANDS  
AND LUXE, LOCAL RETAILERS.

／ 6

SUCCESSFUL RESTAURANTS ON-SITE.







Galleria possesses the highest sales per square foot of any shopping destination in the Twin Cities market, as well as the upper Midwest.

THE LARGEST CONCENTRATION OF

*LUXURY BRANDS*

BETWEEN CHICAGO AND DENVER.

Top home stores draw from the FIVE STATE area, including Arhaus, Crate & Barrel, Design Within Reach, Interior Define, Parachute, Pottery Barn, PBteen, Pottery Barn Kids, Rejuvenation and Williams-Sonoma.



FROM STEAK TO SUSHI, GALLERIA BOASTS

# *SIX DELICIOUS DINING OPTIONS*

FOR WHATEVER YOU'RE CRAVING



Big Bowl

CôV Edina

CRAVE

Good Earth Restaurant

Sweetgreen

Pittsburgh Blue



## BRANDS IN THE BUILDING

*A snapshot of the unparalleled brands currently offered in our mix of sophisticated stores*

AG Adriano Goldschmied	Goldbergh	Parachute
AGL	Hart Schaffner Marx	Parajumpers
Alexandre Birman	Helly Hansen	Parker Thatch
Alex Crane	Hereu	Patagonia
Alo Yoga	Hickey Freeman	Pedro Garcia
ba&sh	Holebrook Sweden	Penelope Chilvers
Barbour	James Perse	Peter Millar
Bogner	Jerome Dreyfuss	Public Rec
Brioni	Jo Malone	Rails
Canada Goose	Johnny O	Ralph Lauren
Canali	Johnny Was	Rebecca Minkoff
Chan Luu	Joie	Rothy's
Chanel Vintage	Julie Vos	Scotch & Soda
Chantelle	kate spade new york	See by Chloe
Cleobella	Kiehl's	Shinola
COACH	La Mer	Sol Angeles
Cotopaxi	Lilly Pulitzer	Sorel
Cuts	Loeffler Randall	Spanx
David Yurman	Longchamp	Spartina
Diptique	Louis Vuitton	Stuart Weitzman
DL 1961	Mackage	Suitsupply
Drew	Marion Parke	Theory
Elie Tahari	Marine Layer	Tiffany & Co.
Eton	Mulberry	Tory Burch
Equipment	MZ Wallace	Veja
Faherty	Nation LTD	Vince
Farm Rio	PAIGE	Vuori
Filson	Pajar	Wacoal







## UNRIVALED *EXPERIENCES*

Galleria hosts an exceptional mix of events and traffic-driving initiatives throughout the year.

Fashion shows, seasonal promotions and curated experiences position Galleria as a fashion & trend leader in the market.

The can't-miss spring Floral Experience is an annual tradition that results in substantial traffic and sales increases for Galleria retailers.





# *AN IDEAL LOCATION*

130,000+ cars drive by Galleria daily.

Galleria is surrounded by the area's  
highest net-worth zip codes.

**FRANCE AVENUE HAS BEEN THE #1 RETAIL  
DESTINATION FOR OVER 50 YEARS.**

Adjacent to The Westin Edina Galleria Hotel,  
which has the highest ADR in the market.







## THE TWIN CITIES *MARKET*

Upper Midwest's cultural hub for music, comedy, art museums and theatre. Second only to New York City in theater seats per capita.



**BUSINESS INSIDER RANKED MINNEAPOLIS ST. PAUL AMONG THE TOP 10 MARKETS FOR EDUCATED MILLENNIALS**



**3.6 MILLION RESIDENTS – LARGER THAN DENVER, CHARLOTTE, ST. LOUIS AND SAN DIEGO.**



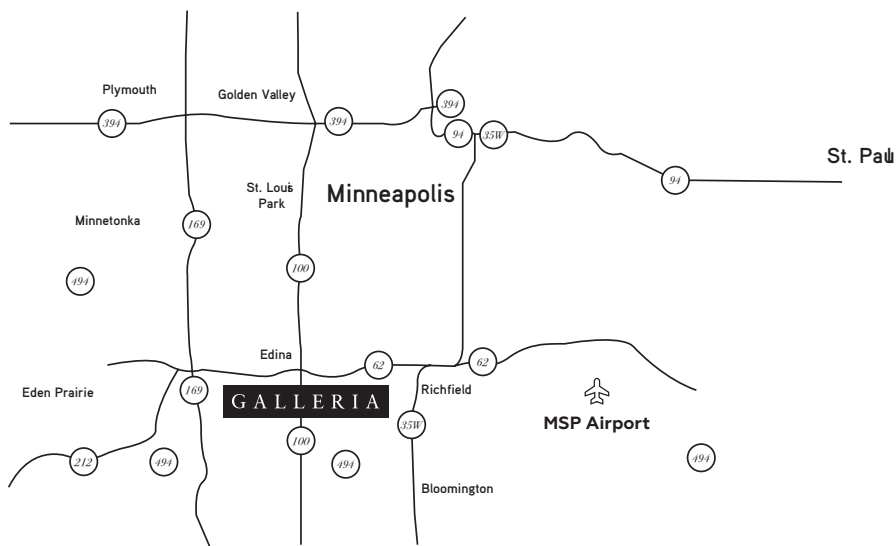
One of few U.S. states with a professional team in every major sport, including the Minnesota Vikings, Minnesota Twins, Minnesota Timberwolves, Minnesota Lynx, Minnesota Wild and Minnesota United FC.

# 16TH LARGEST

METROPOLITAN AREA IN THE U.S.

Total market annual retail sales in the Twin Cities exceed \$5.6 billion. Larger than those of San Diego, Denver, Austin, St. Louis, Tampa and San Jose.

15 Fortune 500 Companies - Minnesota ranks third in Fortune 500 Companies per 1 million people.



## A DESIRABLE *DESTINATION*

One of the world's great cultural, business, sports and retail capitals, the Twin Cities offers a unique opportunity for the finest brands.





## TRADE *AREAS*



The primary trade area of 328,000 people boasts an average household income of \$109,400 with 2 in 3 people having college degrees. The audience nearly doubles with the addition of the daytime population of 308,747 employees, a rare concentration.

The total trade area of more than 1 million people has an average household income of \$93,400.  
...and the population continues to rise.







## THE GALLERIA *SHOPPER*

**\$150**

Average expenditure per trip. 40% above national benchmark.



**GALLERIA SHOPPERS ARE AFFLUENT BRAND ENTHUSIASTS  
WITH 70% OF SHOPPING CENTER SALES FROM \$100K+  
HOUSEHOLDS.**

**GALLERIA IS LOCATED IN EDINA, MN, WHICH BOASTS THE  
FIRST, SECOND AND FOURTH MOST AFFLUENT ZIP CODES IN  
THE ENTIRE STATE.**



More than 3 in 4 shoppers have college degrees.



# STORE DIRECTORY

87	Allen Edmonds	612-851-2285
70	Allure Intimate Apparel	952-920-1111
88	Alo Yoga	COMING SOON
69	Ampersand	952-920-2118
102	Arhaus Furniture	952-920-0463
103	Barnes & Noble	952-920-2124
104	Barnes & Noble Café	952-920-2124
17	Big Bowl	952-928-7888
86	Bluemercury	952-922-1100
100	Chico's	952-253-0560
58	Chocolate Moonshine	
48	Coach	952-925-5225
30	Cole Haan	952-920-9377
96	CòV Edina	952-999-4011
53	Crate & Barrel	952-920-2300
36	CRAVE	952-697-6000
25	David Yurman	952-920-9331
105	Design Within Reach	952-920-0225
50	Eileen Fisher	952-929-0469
110	Elina's Tailoring and Design	612-396-7035
98	Face Foundrie	855-959-3223
33	Fawbush's	952-922-5717
91	Filson	612-338-5506
71	Free People	952-920-1041
GC	Galleria Concierge	952-925-4321
60	Good Earth	952-925-1001
72	Hammer Made	952-681-2534
46	H.O.B.O.	952-926-3034
49	Interior Define	612-688-1422
76	InVision Optical	952-920-5458
37	JB Hudson	612-274-7181
31	J.H. & Sons	612-274-7166
80	J. Jill	952-926-6533
74	J. McLaughlin	952-582-1526
64	Jaxen Grey	952-219-7289
83	Johnny Was	612-421-7174
27	kate spade new york	952-920-9950
99B	Lili Salon Spa	952-224-3300
43	L'Occitane	952-926-0126
23	Louis Vuitton	952-920-8000
54	Madewell	320-299-2375

26	Marmi	952-920-0350
81	Melly	952-929-9252
66	NIC + ZOE	508-907-6234
94	Parachute	612-445-3680
90	Pittsburgh Blue	952-567-2700
11	Pottery Barn	952-925-1610
16	Pottery Barn Kids	952-848-8705
19	PB Teen	952-929-1205
45	Pumpz	952-926-2252
10	Rejuvenation	952-285-6865
24	Rothy's	952-600-7371
78	Shinola	612-338-5493
97	Starbucks	952-924-0344
107	Suitsupply	952-213-2599
77	Sundance	952-920-0533
39	sweetgreen	952-900-2800
61	Sweet Ivy	952-456-6598
20	Tiffany & Co.	952-922-0066
99A	Tonic Barber	952-224-0059
29	Tory Burch	952-929-0020
89	Trail Mark	952-929-1950
28	Tumi	952-920-0682
85	Twill	952-922-2711
55	Vineyard Vines	952-929-9831
68	Warby Parker	952-314-7981
200	Westin Edina Galleria, The	952-567-5000
40	Williams-Sonoma	952-285-1338
92	YETI	952-213-2327

## CONCIERGE

Our concierge area, located between Vineyard Vines and Pumpz, offers store and general information as well as stroller and wheelchair check out. Galleria also offers family restrooms and nursing lounges. Restrooms and family rooms are located on both sides of the shopping center.

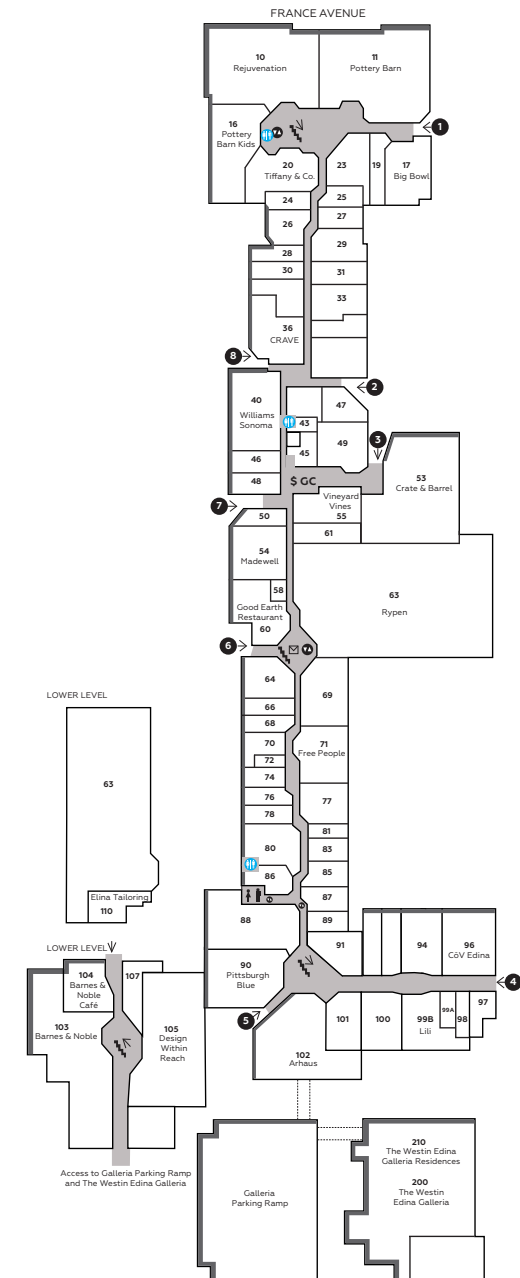
- The east restrooms/family rooms are located by lululemon.
- The central restrooms are located on the lower level. Take the elevator by Pumpz to access.
- The west restrooms/family rooms are located by Pottery Barn Kids.

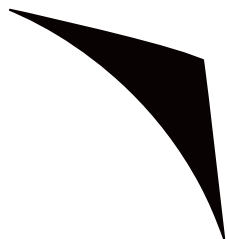
## KEY

- ELEVATORS
- ENTRANCES

GC GALLERIA CONCIERGE

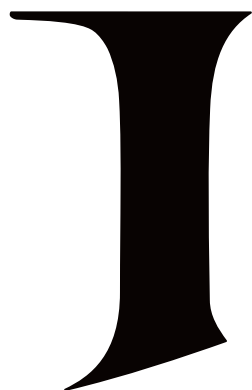
- POST BOX
- RESTROOMS/FAMILY ROOMS
- STAIRS





GALLERIAEDINA.COM

@GALLERIAEDINA



## CONTACT

JENNIFER SMITH

JENNIFER.SMITH@HINES.COM

O:952.915.8489

C:612.916.4916

