



GALLERIA



LEASING  
OPPORTUNITIES



# INSPIRED BY THE UNCOMMON

The Galleria is the upper Midwest's most uncommon shopping destination offering exclusive fashion, home, beauty and dining moments. Located south of downtown Minneapolis in Edina, Minnesota, we carry a collection of well-known international brands, including Louis Vuitton, Tory Burch, Tiffany & Co., David Yurman, kate spade new york and more, in addition to luxe local stores and unique dining options.





## A CURATED MIX

70

HIGH-END NATIONAL BRANDS AND LUXE,  
LOCAL RETAILERS.



7

SUCCESSFUL RESTAURANTS ON-SITE.



Galleria possesses the highest sales per square foot of any shopping destination in the Twin Cities market, as well as the upper Midwest.



**THE LARGEST CONCENTRATION OF LUXURY BRANDS BETWEEN CHICAGO AND DENVER.**



Top home stores draw from the FIVE STATE area, including Design Within Reach, Crate & Barrel, Arhaus, Pottery Barn, PBteen, Pottery Barn Kids and Williams-Sonoma.







**FROM STEAK TO SUSHI, GALLERIA  
BOASTS SEVEN DELICIOUS DINING  
OPTIONS FOR WHATEVER YOU'RE  
CRAVING**

—

Barnes & Noble Kitchen  
Big Bowl  
CōV Edina  
CRAVE  
Good Earth Restaurant  
Peoples Organic  
Pittsburgh Blue



# BRANDS IN THE BUILDING

3.1 Phillip Lim	Joie	Pedro Garcia
AG Adriano Goldschmied	Jo Malone	Peter Millar
Alexander Wang	Johnny Was	Piazza Sempione
Alexis Bittar	kate spade new york	Polo Ralph Lauren
Armani	KÜHL	Rebecca Minkoff
Badgley Mischka	La Mer	Robert Clergerie
Barbour	Lafayette 148	Robert Talbott
Bogner	Lilly Pulitzer	Robert Rodriguez
Carmen Marc Valvo	Longchamp	Scotch & Soda
Chan Luu	Louis Vuitton	See by Chloé
David Yurman	lululemon	Shinola
Diane Von Furstenberg	Max Mara Weekend	Shoshanna
Elie Tahari	Maison Scotch	Stuart Weitzman
Equipment	Milly	Suitsupply
Escada Sport	Missoni	Theory
Ferragamo	Moncler	Tiffany & Co.
Filson	Mulberry	Tom Ford
Frye	NIC+ZOE	Tory Burch
Hickey Freeman	n:Philanthropy	Vince
Hunter	Pajar	Vintage Chanel
James Perse	Parajumpers	Warby Parker



LOUIS VUITTON



SHINOLA



MONCLER



HUNTER





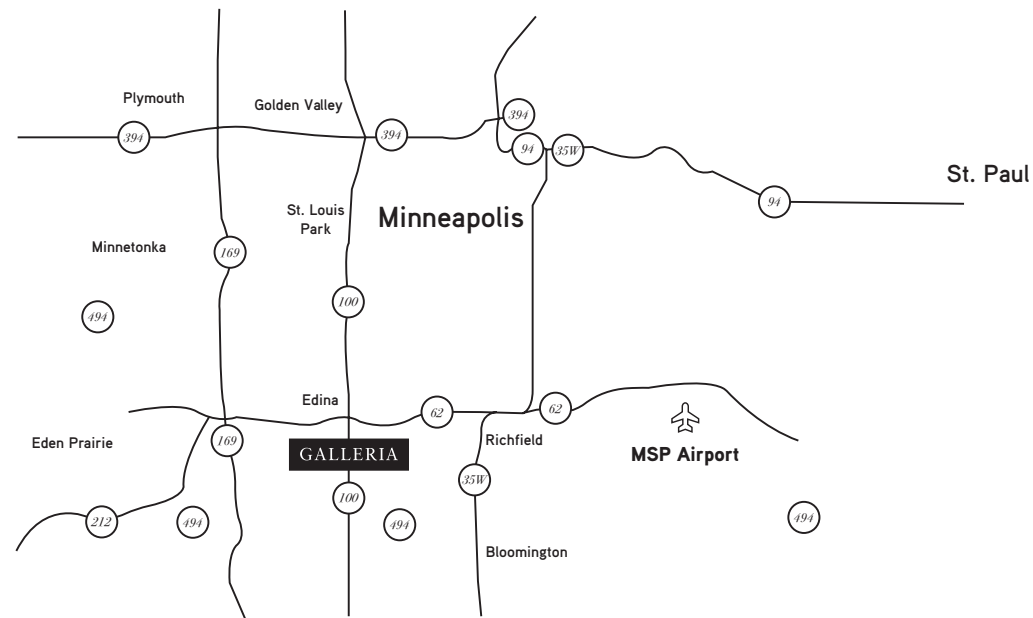
## A DESIRABLE DESTINATION

One of the world's great cultural, business, sports and retail capitals, the Twin Cities offers a unique opportunity for the finest brands.

### 15TH LARGEST METROPOLITAN AREA IN THE U.S.

Total market annual retail sales in the Twin Cities exceed \$5.6 billion. Larger than those of San Diego, Denver, Austin, St. Louis, Tampa and San Jose.

18 Fortune 500 Companies - Minnesota ranks third in Fortune 500 Companies per 1 million people.



## THE TWIN CITIES MARKET

Upper Midwest's cultural hub for music, comedy, art museums and theatre. Second only to New York City in theater seats per capita.

**BUSINESS INSIDER RANKED MINNEAPOLIS ST. PAUL  
AMONG THE TOP 10 MARKETS FOR EDUCATED  
MILLENNIALS.**

**3.6 MILLION RESIDENTS – LARGER THAN DENVER,  
CHARLOTTE, ST. LOUIS AND SAN DIEGO.**

One of few U.S. states with a professional team in every major sport, including the Minnesota Vikings, Minnesota Twins, Minnesota Timberwolves, Minnesota Lynx, Minnesota Wild and Minnesota United FC.







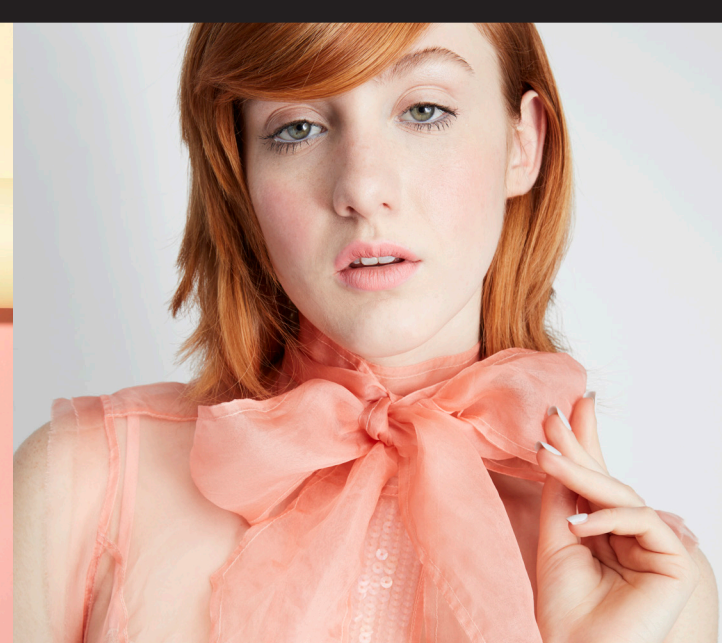
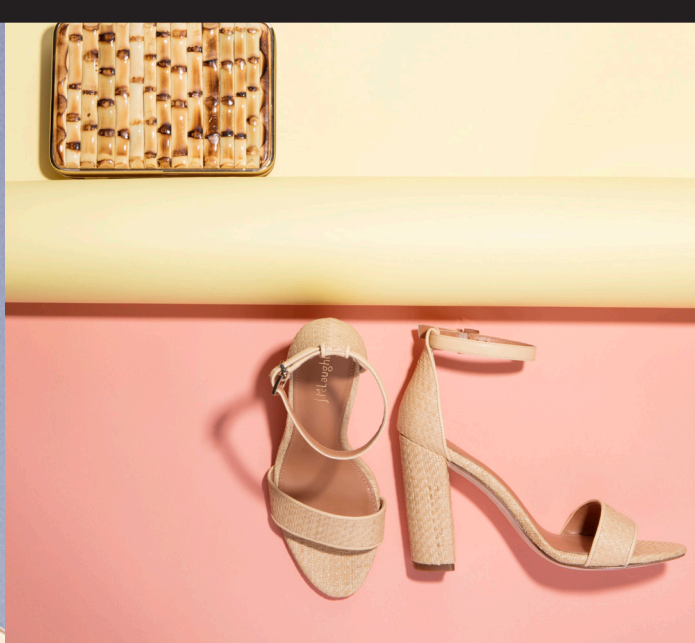
## FRANCE AVENUE

130,000+ cars drive by Galleria daily.

Galleria is surrounded by the area's  
highest net-worth zip codes.

HAS BEEN THE #1 RETAIL  
DESTINATION FOR OVER  
50 YEARS.

Adjacent to The Westin Edina Galleria  
Hotel, which has the highest  
ADR in the market.



## TRADE AREAS

The primary trade area of 328,000 people boasts an average household income of \$109,400 with 2 in 3 people having college degrees. The audience nearly doubles with the addition of the daytime population of 308,747 employees, a rare concentration.

The total trade area of more than 1 million people has an average household income of \$93,400. ... and the population continues to rise, growing 4.2% by 2019.





## THE GALLERIA SHOPPER

**\$150**

Average expenditure per trip.  
40% above national benchmark.



Galleria shoppers are affluent  
brand enthusiasts with 70%  
of shopping center sales from  
\$100K+ households.

Galleria is located in Edina, MN, which  
boasts the first, second and fourth most  
affluent zip codes in the entire state.



More than 3 in 4 shoppers have  
college degrees.

# STORE DIRECTORY

87	Allen Edmonds	612-851-2285
70	Allure Intimate Apparel	952-920-1111
69	Amperсанд	952-920-2118
102	Arhaus Furniture	952-920-0463
33	Bachman's Floral	952-922-8910
103	Barnes & Noble	952-920-2124
104	Barnes & Noble Kitchen	952-929-4366
17	Big Bowl	952-928-7888
86	Bluemercury	952-922-1100
100	Chico's	952-253-0560
48	Coach	952-925-5225
30	Cole Haan	952-920-9377
96	CōV Edina	952-999-4011
53	Crate & Barrel	952-920-2300
36	CRAVE	952-697-6000
25	David Yurman	952-920-9331
105	Design Within Reach	952-920-0225
31	dugo	952-746-4440
50	Eileen Fisher	952-929-0469
110	Elina's Tailoring and Design	612-396-7035
98	Face Foundrié	952-479-7383
64	Fawbush's	952-922-5717
32	Fifth Ave Optical	952-922-1051
91	Filson	612-338-5506
71	Free People	952-920-1041
GC	Galleria Concierge	952-925-4321
60	Good Earth	952-925-1001
51	Grande Gallery	612-900-5639
49	Groveland Confections	612-237-6299
72	Hammer Made	952-681-2534
46	H.O.B.O.	952-926-3034
76	InVision Optical	952-920-5458
80	J. Jill	952-926-6533
74	J. McLaughlin	952-582-1526
92	J.W. Hulme	952-417-6854
93	Jaxon Grey	952-219-7289
83	Johnny Was	612-421-7174
27	kate spade new york	952-920-9950
111	Lakes Sotheby's International Realty	952-230-3101
37	Legacy Toys	952-955-6938
99B	Lili Salon Spa	952-224-3300

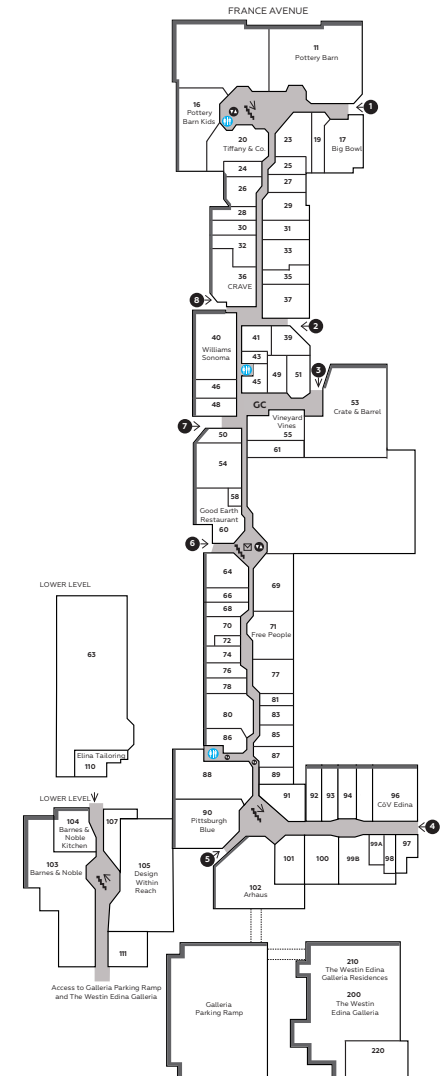
43	L'Occitane	952-926-0126
23	Louis Vuitton	952-920-8000
88	Lululemon	952-920-0756
26	Marmi	952-920-0350
81	Melly	952-929-9252
66	NIC + ZOE	508-907-6234
61	North Face, The	952-929-1641
58	Origins	952-929-9518
24	Paper Source	651-252-1544
41	Peloton	952-260-4592
39	Peoples Organic	952-426-1856
90	Pittsburgh Blue	952-567-2700
78	Polarn O. Pyret	952-225-3154
11	Pottery Barn	952-925-1610
16	Pottery Barn Kids	952-848-8705
19	PB Teen	952-929-1205
45	Pumpz	952-926-2252
94	Roe Wolfe	612-294-6583
35	Shinola	612-338-5493
101	Soft Surroundings	952-562-0990
97	Starbucks	952-924-0344
107	Suitsupply	952-213-2599
77	Sundance	952-920-0533
20	Tiffany & Co.	952-922-0066
99A	Tonic Barber	952-224-0059
29	Tory Burch	952-929-0020
89	Trail Mark	952-929-1950
28	Tumi	952-920-0682
85	Twill	952-922-2711
55	Vineyard Vines	952-929-9831
68	Warby Parker	952-314-7981
200	Westin Edina Galleria, The	952-567-5000
40	Williams-Sonoma	952-285-1338

## CONCIERGE

Our concierge area, located between Vineyard Vines and Pumpz, offers store and general information as well as free wi-fi. Galleria also offers family restrooms and nursing lounges. Restrooms and family rooms are located on both sides of the shopping center. The east restrooms/family rooms are located by lululemon. The west restrooms/family rooms are located by Pottery Barn Kids.

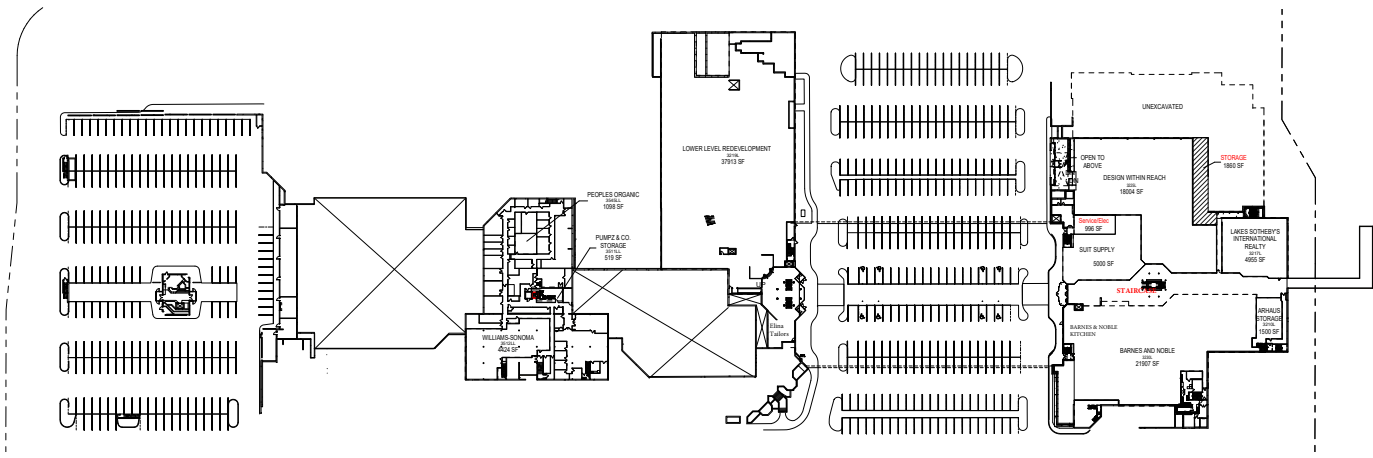
## KEY

-  ELEVATORS
-  ENTRANCES
-  POST BOX
-  RESTROOM/FAMILY ROOMS
-  STAIRS
-  GC GALLERIA CONCIERGE





## LEASING PLAN





GALLERIAEDINA.COM

@GALLERIAEDINA



## CONTACT



JENNIFER SMITH

Jennifer.Smith@hines.com

O:952.915.8489

C:612.916.4916