



Committed to retail investment,  
development, acquisition and  
management since 1957.

**Hines**

RETAIL TIMELINE





HERMÈS

FIG & OLIVE

HERMÈS

FIG & OLIVE

TASTING BAR

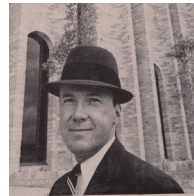


# SIX DECADES OF EXCELLENCE IN RETAIL INVESTMENT

Retail has been in the firm's DNA since its inception, with the development of the renowned Gallerias in Houston and Dallas, the largest shopping complex in Catalonia Spain, and the first international-brand outlet mall in Russia. With over six decades of experience in creating places for people to shop—including a great deal of ground-floor retail in major buildings—the firm is well acquainted with the wants and needs of retail tenants, what makes retail real estate attractive to consumers and

how retail can be a desirable investment asset class. Hines also has a significant retail acquisition and redevelopment platform covering a variety of retail property types, including mixed-use; high-street; community centers; lifestyle centers; and outlet, grocery and enclosed malls. With ready capital as well as extensive leasing and marketing experience across all product categories, Hines continues to seek retail investment and development opportunities globally.

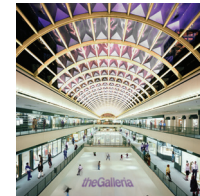




Gerald D. Hines founds his namesake firm and begins working on small office, industrial and retail projects Houston, TX



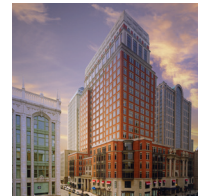
Hines develops several single-tenant retail projects and a shopping center in South Texas Harlingen, TX



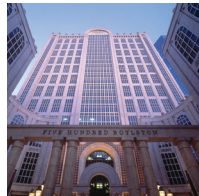
**THE GALLERIA**  
Houston, TX  
788,000 sq. ft.  
73,205 sq. m.



**GALLERIA**  
Dallas, TX  
1,017,000 sq. ft.  
94,479 sq. m.



**TWO TWENTY TWO BERKELEY**  
Boston, MA  
44,785 sq. ft.  
4,161 sq. m.



**FIVE HUNDRED BOYLSTON**  
Boston, MA  
65,359 sq. ft.  
6,072 sq. m.



**FIRST COLONY MALL**  
Sugar Land, TX  
1,300,000 sq. ft.  
120,770 sq. m.



**HOFGARTEN AM GENDARMENMARKT**  
Berlin, Germany  
41,086 sq. ft.  
3,817 sq. m.



**CANAL PLACE RENOVATION**  
New Orleans, LA  
260,000 sq. ft.  
24,164 sq. m.



**2525 WEST END**  
Nashville, TN  
65,105 sq. ft.  
6,048 sq. m.



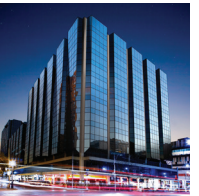
**DIAGONAL MAR CENTRE**  
Barcelona, Spain  
936,460 sq. ft.  
86,997 sq. m.



**ASPEN HIGHLANDS VILLAGE**  
Aspen, CO  
36,000 sq. ft.  
3,344 sq. m.



**GM RENAISSANCE CENTER: PODIUM**  
Detroit, MI  
165,000 sq. ft.  
15,334 sq. m.



**ATRIUM ON BAY**  
Toronto, Canada  
142,000 sq. ft.  
13,197 sq. m.



**EUROSQUARE**  
St Ouen, France  
3,993 sq. ft.  
371 sq. m.



**GROCERY-ANCHORED CENTERS PORTFOLIO**  
Southeast/Southwest U.S.  
1,038,925 sq. ft.  
96,519 sq. m.



**UPPER EASTSIDE BERLIN**  
Berlin, Germany  
102,989 sq. ft.  
9,568 sq. m.



**CITY CENTER MERIDA**  
Merida, Mexico  
286,996 sq. ft.  
26,662 sq. m.



**CITY CENTER BOSQUE ESMERALDA**  
Mexico City, Mexico  
276,111 sq. ft.  
25,651 sq. m.



**ZIELO SHOPPING POZUELO**  
Comunidad De Madrid  
169,489 sq. ft.  
15,746 sq. m.



**DIE MITTE-SHOPPING AM ALEXANDERPLATZ**  
Berlin, Germany  
209,584 sq. ft.  
19,470 sq. m.



**ONE GRAFTON STREET REDEVELOPMENT**  
London, England  
6,480 sq. ft.  
602 sq. m.



**BRINDLEYPLACE**  
Birmingham, United Kingdom  
78,398 sq. ft.  
7,283 sq. m.



**SONY CENTER**  
Berlin, Germany  
56,024 sq. ft.  
5,205 sq. m.



**DOMKASKADEN**  
Hamburg, Germany  
5,995 sq. ft.  
557 sq. m.



**ONE JACKSON SQUARE**  
New York, NY  
7,300 sq. ft.  
678 sq. m.



**SCHLOSSSTRASSE**  
Berlin, Germany  
68,028 sq. ft.  
6,320 sq. m.



**POSTQUARTIER**  
Stuttgart, Germany  
101,600 sq. ft.  
9,442 sq. m.



**GALLERIA**  
Edina, MN  
380,600 sq. ft.  
35,371 sq. m.



**PLAZA DE CANALEJAS**  
Madrid, Spain  
172,200 sq. ft.  
16,003 sq. m.



**PORTA NUOVA GARIBOLDI - UNICREDIT CAMPUS**  
Milan, Italy  
208,724 sq. ft.  
19,398 sq. m.



**THE AVENUE MURFREESBORO**  
Murfreesboro, TN  
747,500 sq. ft.  
69,442 sq. m.



**HOFSTATT**  
Munich, Germany  
171,300 sq. ft.  
15,914 sq. m.



**THE MARKETS AT TOWN CENTER**  
Jacksonville, FL  
317,400 sq. ft.  
29,488 sq. m.



**IHME ZENTRUM**  
Hannover, Germany  
247,570 sq. ft.  
23,008 sq. m.



**METROPOLIS**  
Moscow, Russia  
2,200,000 sq. ft.  
204,460 sq. m.



**CITYCENTERDC - PHASE I**  
Washington, D.C.  
295,000 sq. ft.  
27,416 sq. m.



**KRONPRINZBAU**  
Stuttgart, Germany  
57,102 sq. ft.  
5,305 sq. m.



**CALEIDO STUTTGART**  
Stuttgart, Germany  
10,358 sq. ft.  
962 sq. m.



**LIVINGSTON (THE CENTRE)**  
Livingston, Scotland  
859,802 sq. ft.  
79,907 sq. m.



**OUTLET VILLAGE PULKOVO**  
St. Petersburg, Russia  
235,000 sq. ft.  
21,832 sq. m.



**LIFFEY VALLEY**  
Dublin, Ireland  
766,390 sq. ft.  
71,250 sq. m.



**THE RIM**  
San Antonio, TX  
796,400 sq. ft.  
73,990 sq. m.



**KÖ-QUARTIER**  
Düsseldorf, Germany  
21,500 sq. ft.  
2,000 sq. m.



**60 LONDON**  
London, United Kingdom  
16,511 sq. ft.  
1,534 sq. m.



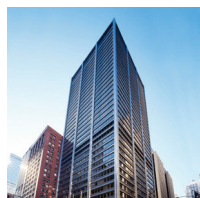
**OUTLET VILLAGE BELAYA DACHA I**  
Moscow, Russia  
373,569 sq. ft.  
34,718 sq. m.



**ONE MUSEUM PLACE (FORMERLY JING AN)**  
Shanghai, China  
85,596 sq. ft.  
7,952 sq. m.



**ZOOM**  
Berlin, Germany  
102,989 sq. ft.  
9,568 sq. m.



**HARRIS BANK BUILDING COMPLEX**  
Chicago, Illinois  
79,420 sq. ft.  
7,427 sq. m.



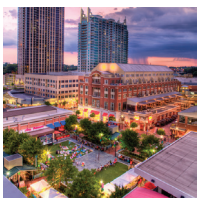
**GRAN VIA 44**  
Madrid, Spain  
9,688 sq. ft.  
900 sq. m.



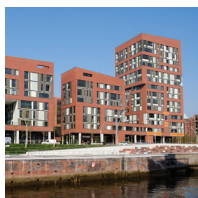
**ARCS 10**  
Barcelona, Spain  
12,798 sq. ft.  
3,901 sq. m.



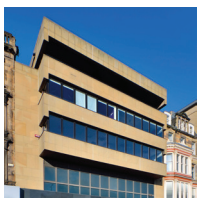
**DÜSSELDORF ARCADEN**  
Düsseldorf, Germany  
389,650 sq. ft.  
36,200 sq. m.



**TOWN CENTER AT ATLANTIC STATION**  
Atlanta, Georgia  
596,000 sq. ft.  
54,441 sq. m.



**ÜBERSEEQUARTIER NORD**  
Hamburg, Germany  
86,540 sq. ft.  
8,040 sq. m.



**124-125 PRINCES STREET**  
Edinburgh, United Kingdom  
14,954 sq. ft.  
1,389 sq. m.



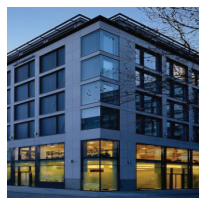
**DÜSSELDORF ARCADEN**  
Düsseldorf, Germany  
389,650 sq. ft.  
36,200 sq. m.



**KARL JOHANS GATE 45**  
Oslo, Norway  
54,896 sq. ft.  
5,100 sq. m.



**VIA DANTE 16**  
Milan, Italy  
23,056 sq. ft.  
2,142 sq. m.



**SONNENSTRASSE 9**  
Munich, Germany  
5,383 sq. ft.  
500 sq. m.



**VIA TORNABUONI**  
Florence, Italy  
12,367 sq. ft.  
1,149 sq. m.



**229-249 BUCHANAN ST**  
Glasgow, United Kingdom  
53,937 sq. ft.  
4,000 sq. m.



**PIAZZA CORDUSIO**  
Milan, Italy  
43,050 sq. ft.  
4,000 sq. m.



**CARLSQUARTIER**  
Düsseldorf, Germany  
5,920 sq. ft.  
550 sq. m.



**ROYAL EXCHANGE**  
Manchester, United Kingdom  
148,351 sq. ft.  
13,782 sq. m.



**MARCHE SAINT GERMAIN**  
Paris, France  
22,744 sq. ft.  
2,113 sq. m.



**VIA TORINO**  
Milan, Italy  
17,072 sq. ft.  
1,586 sq. m.



**LIFFEY VALLEY EXTENSION**  
Dublin, Ireland  
334,940 sq. ft.  
31,117 sq. m.



**GRAFTON COLLECTION - LOT 1**  
Dublin, Ireland  
21,430 sq. ft.  
1,991 sq. m.



**CITYCENTERDC - PHASE II**  
Washington, D.C.  
295,000 sq. ft.  
27,416 sq. m.



**KASERNENSTRASSE**  
Düsseldorf, Germany  
57,050 sq. ft.  
5,300 sq. m.



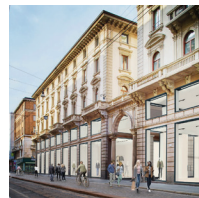
**KRONPRINZBAU 2**  
Düsseldorf, Germany  
14,445 sq. ft.  
1,342 sq. m.



**VIKING PORTFOLIO**  
Copenhagen, Nordics  
57,750 sq. ft.  
5,365 sq. m.



**ROOKWOOD**  
Cincinnati, OH  
600,071 sq. ft.  
55,748 sq. m.



**VIA OREFICI**  
Milan, Italy  
43,050 sq. ft.  
4,000 sq. m.



**PRECIADOS 13**  
Madrid, Spain  
35,165 sq. ft.  
3,267 sq. m.



**PASSEIG DE GRACIA 17**  
Barcelona, Spain  
26,910 sq. ft.  
2,500 sq. m.



**KØBMAGERGADE PORTFOLIO**  
Copenhagen, Denmark  
14,391 sq. ft.  
1,337 sq. m.



**GALLERIA EXPANSION**  
Edina, MN  
75,000 sq. ft.  
6,968 sq. m.



**GRAFTON COLLECTION - LOT 2**  
Dublin, Ireland  
61,375 sq. ft.  
5,702 sq. m.



**28 MADELEINE**  
Paris, France  
16,092 sq. ft.  
1,495 sq. m.



**MIRA**  
Munich, Germany  
238,657 sq. ft.  
22,172 sq. m.



**CENTRAL PLAZA**  
Dublin, Ireland  
68,141 sq. ft.  
6,330 sq. m.



**LIBERTY TOWER**  
Milan, Italy  
6,835 sq. ft.  
635 sq. m.



**APPLE, CHAMPS ELYSES**  
Paris, France  
27,587 sq. ft.  
2,563 sq. m.



**CHERRYWOOD TOWN CENTRE**  
Cherrywood, Ireland  
377,000 sq. ft.  
35,024 sq. m.



**CHATHAM & KING, PHASE I**  
Dublin, Ireland  
64,480 sq. ft.  
5,990 sq. m.





**KENTON H. MCKEEHAN**

Senior Managing Director

Houston, TX

713-966-2022

[Kenton.McKeehan@hines.com](mailto:Kenton.McKeehan@hines.com)

**Hines**  
[www.hines.com](http://www.hines.com)